

NOTICE OF SERVICE

INTERRUPTION

Supreme Structural Transport Ltd. will be helping one of your neighbors move a house from Lickman Road to Keith Wilson Road during the very early morning hours of Monday February 26th. In coordination with professional electrical contractors, this may cause you to lose power for approx. **one hour anywhere from 11PM on Sunday February 25th to 7AM on Monday February 26th.**

How to prepare:

- Safeguard your computer(s) to prevent loss of data
- Unplug sensitive electronic equipment, such as computers and televisions.
- Set an alternate alarm for the morning

If you have any questions about this, please call our office Monday – Friday from 7AM – 4PM at 604-467-9885 OR during the move Bill on his cell at 778-996-8629.



23660 River Road
Maple Ridge, BC V2W 1B7
Tel: (604) 467-9885



DRAWING SPECIFIC NOTES

- Dimensions shown are in meters and are the minimums except as otherwise indicated
- All permanent signage that will conflict with this site will be covered or removed while the works are in effect
- Maximum distance between adjacent signs to be 100m
- Tubular markers and signs will be double based and well secured during windy conditions
- Distances may be adjusted due to urban block length
- These pages are best printed on a 'tabloid' (11x17) page size

GENERAL NOTES

- Signs shown are representations of signs only and the MCTI Construction Sign Catalogue should be used for detailed sign design
- Dimensions shown are in meters and are the minimums except as otherwise indicated
- All permanent signage that will conflict with this site will be covered or removed while the works are in effect
- Maximum distance between adjacent signs to be 100m
- Tubular markers and signs will be double based and well secured during windy conditions
- Distances may be adjusted due to urban block length
- These pages are best printed on a 'tabloid' (11x17) page size

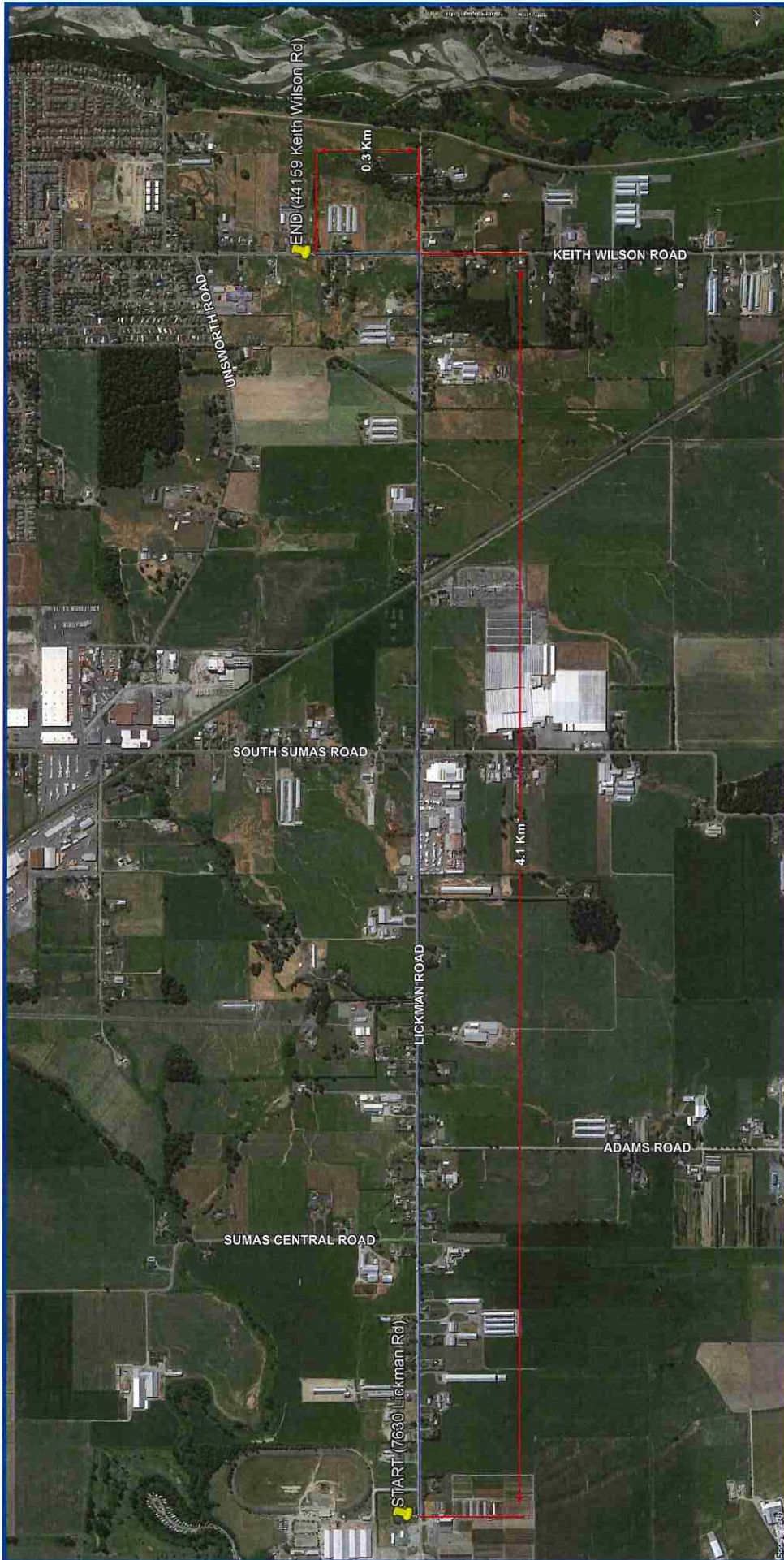
LEGEND

- TRAFFIC CONTROL PERSONNEL
- TRAFFIC BARREL
- SIGN STAND (TRIPPOD)
- TUBULAR MARKER - TYPED
- TRAFFIC CONTROL VEHICLE
- SIGN FLAGS
- TRAVEL ROUTE
- PILOT VEHICLE
- WORK VEHICLE (WIDE LOAD)
- WORK VEHICLE (WIDE LOAD)

Contractor Name:	Supreme Structural Transport Ltd	TCP #	TCP 1 of 1	Date:	February 26th
Job Description:	Wide Load	Location:	Lickman Rd to Keith Wilson Rd, Chilliwack	Traffic Control Figure Number	
Manual for Work on Roadways	2015 Interim Edition	Phone:	Jessica Christensen 604-467-9885	Email:	jessica@supremehm.com
Contractor Contact:	Jessica Christensen	Phone:	778-860-7247	Email:	genny@streetwisetraffic.ca
Traffic Plan Contact:	Genny Scott				

TRAFFIC CONTROL PLAN
DATE OF LAST REVISION
2018-02-17

Streetwise
TRAFFIC CONTROLLERS
TRAFFIC PLAN



DRAWING SPECIFIC NOTES

- Sections of the Route are at a time and "leap frog" to the next;
- TCPs to allow Local Traffic Only in/out of residences ahead of closure;
- Realic Communication between all vehicles and TCPs will be maintained at all times.

GENERAL NOTES

- Signs shall conform to the TCM and the latest catalogue for Standard Traffic Signs;
- Signs shown are representations of signs only and the MCTI Construction Sign Catalogue should be used for detailed sign design;
- Dimensions shown are in meters and are the minimums except as otherwise indicated;
- All permanent signage that will conflict with this site will be covered or removed while the works are in effect;
- Minimum distance between consecutive proposed signs should be 10m;
- Minimum distance between consecutive proposed signs should be 10m;
- Tubular markers and signs will be double based and well secured during windy conditions;
- Distances may be adjusted due to urban block length;
- These pages are best printed on a Tabloid (11x17) page size.

LEGEND

	TRAFFIC CONTROL PERSONNEL		TRAFFIC BARREL
	SIGN STAND (TRIPOD)		TUBULAR MARKER - TYPE D
	SIGN STAND (WINDMASTER)		TRAFFIC CONTROL VEHICLE
	SIGN FLAGS		PILOT VEHICLE
	TRAVEL ROUTE		WORK VEHICLE (WIDE LOAD)

TRAFFIC CONTROL PLAN DATE OF LAST REVISION 2018-02-17	<p>Contractor Name: Supreme Structural Transport Ltd</p> <p>Job Description: Wide Load</p> <p>Manual for Work on Roadways: 2015 Interim Edition</p> <p>Contractor Contact: Jessica Christensen</p> <p>Traffic Plan Contact: Genny Scott</p>	<p>TCF #</p> <p>Location: Lickman Rd to Keith Wilson Rd, Chilliwack</p> <p>Phone: 604-467-9885</p> <p>Phone: 776-860-7247</p>	<p>Date: February 26th</p> <p>Traffic Control Figure Number</p> <p>Email: jessica@supremehm.com</p> <p>Email: genny@streetwisetraffic.ca</p>
--	---	---	--

